



Matrox Infonet TV 2.0

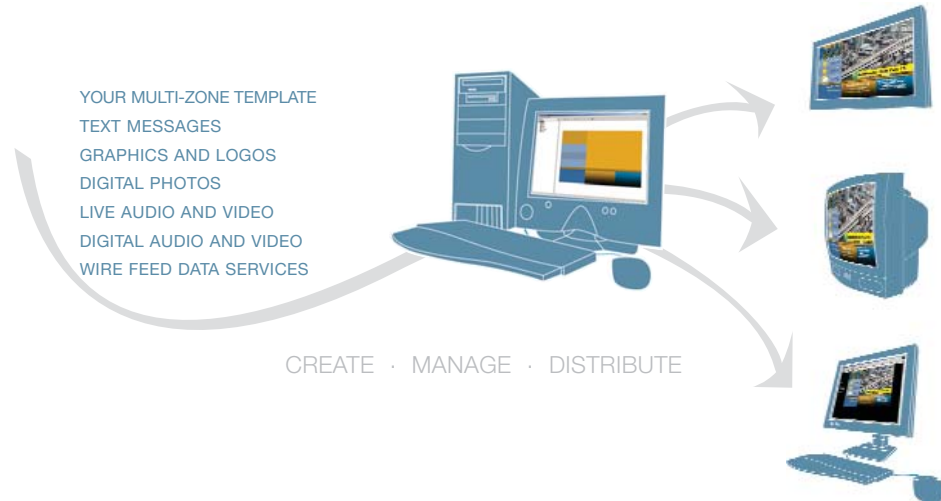
Product Guide April 6, 2003

Table of Contents

Overview	3
Software	3
Video hardware	4
Key Features	5
Target Applications	6
Cable and community information channels	7
Classified advertising channels for cable TV	8
Corporate communications	8
Educational institutions	9
Digital signage	10
Hospitality channels	11
Create	12
Your unique multi-zone look	13
Simple page creation	13
Graphics, logos, and digital photos	13
Live audio and video	13
Digital audio and video	13
Eye-catching effects and transitions	14
Automatic wire feed data services	14
Automatic page creation and dynamic updates from your data files	14
Remote internet submissions	14
Manage	15
Scheduling	15
Logging	15
Distribute	16
Broadcast television	16
Closed-circuit television	16
Internet/intranet	16
Distribution topologies	17
Four Typical System Configurations	18
Matrox InfonetTV - Quick Reference	19

Overview

Matrox InfonetTV is an integrated information delivery system designed for cable and community television, corporate communications, educational institutions, digital signage, and hospitality channels. It gives you the power to communicate your messages, with maximum impact and minimal effort, to any target audience you choose, via cable channels, closed-circuit television, and the internet or an intranet. InfonetTV is completely scalable from simple, very affordable, one-channel systems to comprehensive worldwide networks that include dozens or even hundreds of localized channels. Much more than just a slide show program, InfonetTV gives you the tools you need to create, maintain, and deliver multi-zone channels with a high-end look, full of fresh, dynamic multimedia information.



Matrox InfonetTV is the result of a close collaboration among three leading providers of digital video solutions to broadcasters, cable operators, post-production facilities, and corporations around the world.

Matrox Video Products Group is an Emmy award-winning technology and market leader with over 25 years of experience in the field of digital video hardware and software for realtime editing, DVD authoring, and web streaming applications. Capital Networks Limited, founded in 1991, integrates, markets, and supports software products from DiGiMATiON incorporated, a developer of advanced broadcast and placed-based multimedia authoring solutions.

Matrox InfonetTV combines software and hardware components from these three companies into approved systems sold through a network of Matrox authorized resellers. These resellers also provide installation and training services to customers worldwide.

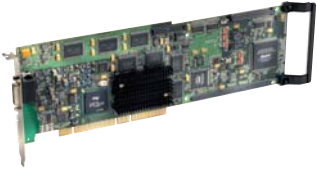
Software

Audience.tv, by DiGiMATiON incorporated, provides all the software tools you need to create, manage, and playout multi-zone television channels and dynamic digital signage 24/7. Thanks to a powerful template-based creation system, anyone can put together state-of-the-art channels. No special programming or graphics design skills are required. Creating and managing multiple independent zones of information containing text, graphics, or video is easy. Graphic artists can create highly customized and sophisticated templates using CorelDRAW10 Graphics Suite, which is included in Matrox InfonetTV.

Two optional software modules are available to expand the capabilities of your InfonetTV installation. Audience.billboard is a content creation and management tool that lets authorized users submit content remotely over the web or an intranet for up to 25 channels per license. Audience.web is a software module that lets you automatically generate interactive, graphically identical websites from your broadcast channels. You can centralize the hosting of up to 25 websites per license.

Overview

Video hardware



The Matrox CG2000 video card combines the latest graphics and broadcast video technologies to provide a complete video/graphics/effects compositing platform with unprecedented benefits.

Other information display systems convert computer VGA progressive output into an interlaced video signal, but this process seriously degrades image quality. Matrox CG2000 eliminates the need for an expensive scan converter and provides true broadcast-quality video output. The Matrox CG2000 card processes images in the native YUV 4:2:2 digital video domain at standard video resolution (720x480 in NTSC, 720x576 in PAL). It provides composite, Y/C, and analog component input and outputs. SDI support is an option. The result is a crisp, clean video signal that is ready to be aired by even the most demanding broadcasters.

CG2000 also replaces the DVE and time base corrector needed with conventional information display systems to integrate analog or digital video into the channel. The built-in digital video mixing engine provides 3D effects and transitions well beyond the capabilities of conventional TV switchers, so you get clean integration of rich multimedia elements with live or disk-based video.

Optional cards support special functions that may be desirable in specific applications:

- An Optibase VideoPlex or Sigma Design Netstream 2000 PCI card is required for MPEG-2 digital video playback. A separate Ultra IDE drive for A/V content is also required. The MPEG-2 files can be automatically transcoded into Windows Media streaming format
- An Osprey-220 video capture card in a separate PC is required when you need to encode live video from VCRs and cameras into Windows Media web steaming format.
- A Matrox CG2000 SDI module is required for serial digital video input/output.

Matrox InfonetTV Key Features

- Communicate your messages with maximum impact and minimal effort via cable channels, CCTV, and the internet
- Scalable network architecture supports dozens or even hundreds of channels from a single master system
- Hundreds of pre-created templates give your channels a professional look in no time
- Multiple independent zones for graphics, text, audio, and live or MPEG-2 video
- Import series of graphics and text databases to automatically create pages
- Weather, headline news, sports, financial, and other wire feed data services available
- Comprehensive scheduling and logging tools let you easily manage your channel
- Superior broadcast-quality output - no scan converter required
- Optional software lets authorized users submit content over the internet
- Optional software lets you automatically generate an interactive web version of your channel



Target Applications

The low cost, high quality, scalability, and ease-of-use of Matrox InfonetTV makes it the ideal multimedia information delivery system for a wide variety of applications.



Cable and community information channels

Public, educational, and government access (PEG) channels
Multiple dwelling unit (MDU) channels on cable, MMDS, and satellite services
Retirement villages
Hospital complexes...



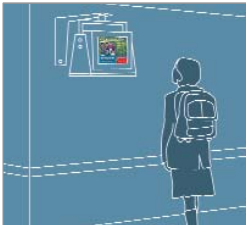
Classified advertising channels for cable TV

Real estate
Automobiles
Household goods
Services
Personal greetings...



Corporate communications

Lobbies
Offices
Cafeterias
Factories
Call centers
Tradeshow exhibits...



Educational institutions

Individual schools
School districts
University campuses...



Digital signage

Malls and retail outlets
Outdoor billboards
Scoreboards in stadiums, arenas, and gymnasiums
Airports, train stations, bus terminals...



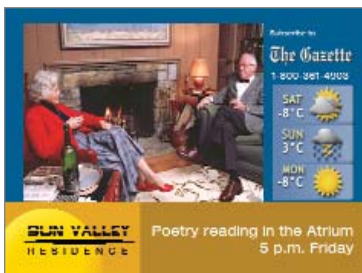
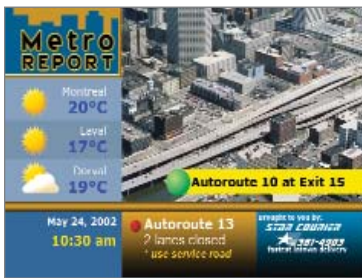
Hospitality channels

Casinos
Resorts
Hotels
Theme parks
Cruise ships
Exposition centers

Target Applications

Cable and community information channels

Public, educational, and government access (PEG) channels
Multiple dwelling unit (MDU) channels on cable, MMDS, and satellite services
Retirement villages, planned communities
Hospital complexes...



- Stand out amongst the growing number of channels with a professional network-television look at an affordable price
- Keep your community up-to-date with all the information they need
- Local time and date plus weather, headline news, sports, financial, and other wire feed data service information can be automatically updated on your channel
- Extend your reach with an automatic simultaneous interactive web cast that is graphically identical to your cable channel
- Involve your community with direct access to content generation through the internet or intranet. For example, coaches can post scores, school administrators can post emergency closing messages, municipal departments can post notices, etc.
- Broadcast-quality output without scan-conversion artifacts ensures pristine viewing
- Reduce operating costs while improving production values
- Get the most from your MDU's entrance security camera channel by using Infonet TV to scale the video into a window and fill the rest of the space with important notices or advertising from local restaurants, florists, video rental shops, grocery stores, etc.
- Eliminate costly flyers and paper notices by communicating directly with your constituents

Target Applications

Classified advertising channels for cable TV

Real estate
Automobiles
Household goods
Services
Personal greetings...



- Attract buyers with broadcast-quality video and high production values
- Dramatically lower your production cost and improve your profit margins while speeding up the delivery of ads to air
- Viewers can browse through all your ads from their home computers using the automatically-generated interactive website
- Clients can use their own PC's to easily create ads with digital photos, high quality text and logos. They can even add voice-overs
- Updates are fast and easy. For example, a real estate agent can post a "sold" or "open house" banner onto an existing ad, or add a hot new listing, as quickly as you can approve the message
- Time sensitive content can be managed quickly, easily, and profitably
- Create new profit centers with ads and sponsorships in multiple independent zones as well as the web cast version of your show
- To simplify billing, content logging and verification is supplied with automatically produced 'as-run' logs in standard exportable files

Corporate communications

Lobbies
Offices
Cafeterias
Factories
Call centers
Tradeshow exhibits...

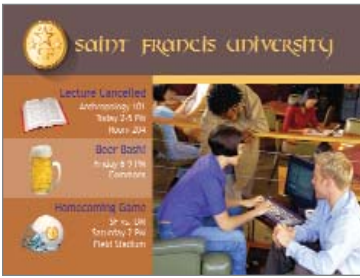


- Enhance your image with attractive corporate video channels and automatically generated web casts
- Motivate, inform, and educate your employees and visitors using TV monitors in the lobby, on the factory floor, in the call center, and at tradeshow exhibits
- Staff can browse the interactive web version of your channel from their desktops in the work place, at home, or anywhere in the world
- Involve management and staff directly by letting them provide content through the internet or intranet
- Increase efficiency and save money by eliminating paper memos

Target Applications

Educational institutions

Individual schools
School districts
University campuses...



- Communicate effectively with parents, teachers, and students
- Get the most from your video displays with multiple zones of text, video, graphics, and audio
- Present that high-end "network television" look that will really make them pay attention
- Automatically generate an interactive website so all the members of your school community can access your information from home, any time of the day or night
- All your messages are pre-scheduled and self running, but can be changed in a flash
- Authorized users can post messages, such as emergency school closing information, from any computer on the internet
- So easy to use, even fifth graders can operate your video channel
- And best of all -- it's affordable on a limited budget!



Target Applications

Digital signage

Malls and retail outlets

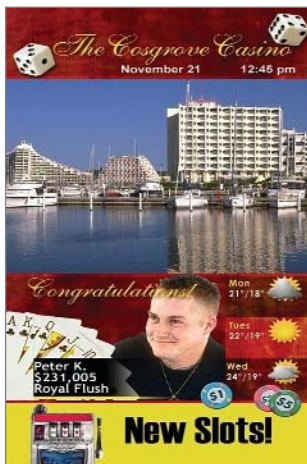
Outdoor billboards

Scoreboards in stadiums, arenas, and gymnasiums

Airports, train stations, bus terminals...



- Easily create dynamic multi-zone video displays on plasma screens (landscape or portrait mode), closed circuit television systems, and large-scale LED pixel displays
- Zoom up to full screen video whenever you like
- Grab attention with network-television quality ads in public venues. Displays come alive with full-motion video, high-quality graphics and text, and stunning transitions
- Easily manage content for dozens or hundreds of remote locations from one central location and allow local customization of some or all content if needed
- Create new revenue opportunities with ads, cross promotions, and sponsorships in independent zones on your information displays



Target Applications

Hospitality channels

Casinos
Resorts
Hotels
Theme parks
Cruise ships
Exposition centers...



- Give your in-room channels, lobby displays, and meeting room signage a professional network-television look
- Maximize revenue by promoting additional products and services while informing guests of the day's events
- Create new profit centers with ads and sponsorships in multiple independent zones by selling space on your channel to local advertisers and event organizers
- Content logging and verification is supplied with automatically produced 'as-run' logs to facilitate billing
- Channel content can be quickly entered and updated by local staff, with minimal training
- Easily manage content for dozens or hundreds of remote locations from one central location and allow local customization of some or all content if needed



Create

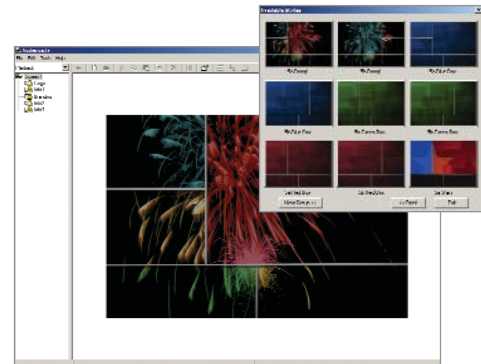
Matrox InfonetTV provides all the tools you need to create highly sophisticated information channels. It lets you easily create and manage multiple, independent display zones that can feature graphics, text, audio, and live or MPEG-2 video. For example, independent zones could be created to hold weather information, local ads, and community information.

Your unique multi-zone look

You can create a professional-looking channel without special graphic design skills. A library containing hundreds of pre-created templates, designed by broadcast artists, get you on the air with a high-end look in no time. The Screen Wizard walks you through the entire process.



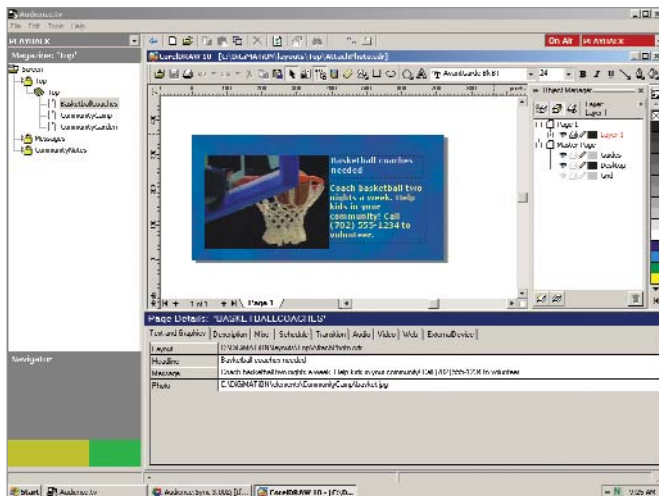
Screen Wizard helps you get started



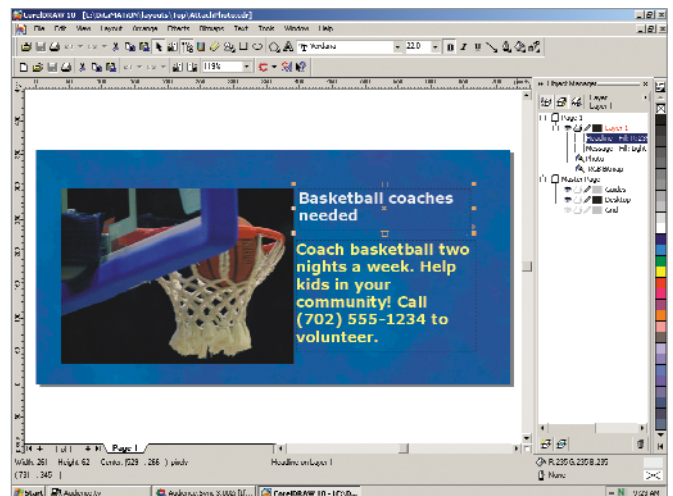
Pre-created templates get you up and running fast

InfonetTV also contributes to attracting and retaining viewers by allowing regular or seasonal updates of your channel's appearance. Simply select a background to refresh the entire look. There is no need to re-edit content as it will automatically be reformatted to fit the new screen design.

CorelDRAW is tightly integrated within InfonetTV's workspace. A simplified interface allows non-specialists to easily create basic templates. For a more sophisticated look, graphic artists can use the complete CorelDRAW10 Graphics Suite that is included with InfonetTV, or any other design package such as Adobe Photoshop, to create design elements. Templates are then assembled from the design elements and text zones are added using CorelDRAW. All TrueType fonts are supported and CorelDRAW10 comes complete with an extensive variety of fonts with dozens of attributes and filters as well as thousands of clip art images that will let your imagination run wild.



Create basic templates quickly and easily

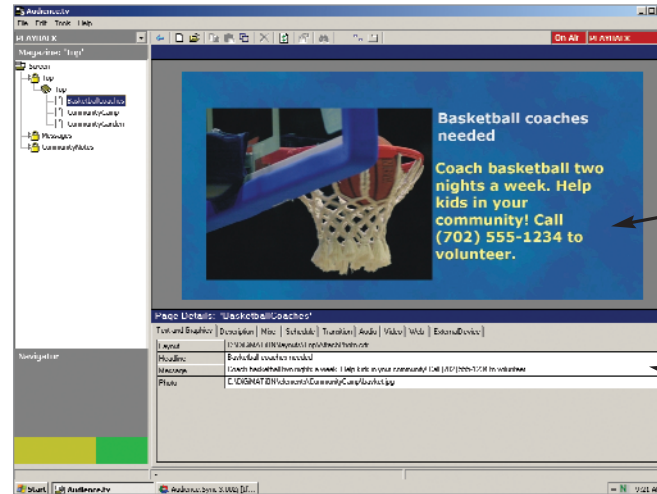


Design your own look with CorelDRAW10

Create

Simple page creation

To create a new content page (that will appear in a specific zone), you simply fill in the various information fields associated with the chosen template. The fields containing references to text, images or sound were created when the template was designed. The specific information is then automatically "rendered" into a graphic frame using the template's recipe. This automation process is key to creating and updating your sophisticated look easily and without the need for graphic design skills. As content is entered and pages are created, they are automatically formatted and sent to the appropriate zone's playlist.



Easily create new pages

Graphics, logos, and digital photos

Your zones can include graphics, logos, and digital photos in a variety of industry standard file formats including BMP, GIF, JPEG, PCX, PNG, PhotoCD, and TIFF. If you import multiple graphics images all at once, such as a PowerPoint slide show, InfonetTV will automatically create a set of pages using the specific template you choose.

Live or MPEG-2 video zones can feature graphics and titles over video.

Live audio and video

Matrox InfonetTV lets you seamlessly integrate live audio and video feeds within your information channel. It supports composite, Y/C, and analog component video. An optional Matrox CG2000 SDI module is also available for use in facilities with serial digital video distribution systems. There is no need for a separate time base corrector to synchronize the computer's output with other video sources. The Matrox CG2000 synchronizes incoming video and performs high-quality scaling for picture-in-picture. The CG2000 card can process one external live video source. An external switcher can be added for multiple sources.

Digital audio and video

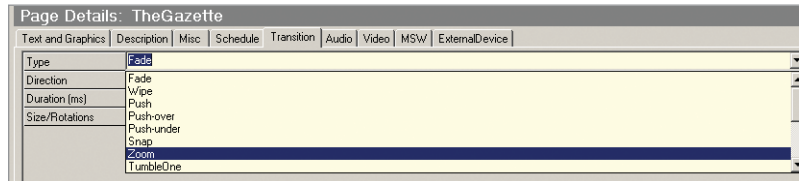
Matrox InfonetTV lets you seamlessly integrate digital MP3 or WAV audio files into your channel.

The optional Optibase VideoPlex or Sigma Design Netstream 2000 PCI card lets you playback MPEG-2 video clips. Matrox DigiSuite MAX and Matrox RT.X100 Xtreme realtime video editing platforms are ideal for video production and MPEG-2 encoding.

Create

Eye-catching effects and transitions

It's easy to give a dynamic look to your channel with stunning transitions between the various information pages. Matrox CG2000 provides a wide selection of broadcast-quality 2D and 3D digital video effects including full screen zoom. Smooth text rolls and crawls are also supported.



Broadcast-quality transitions

Automatic wire feed data services

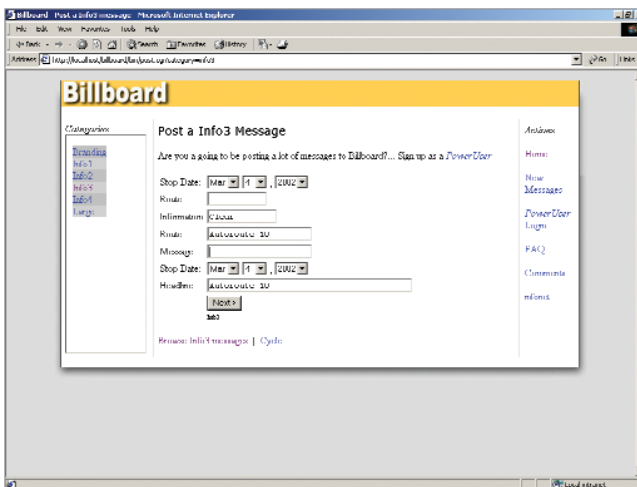
Providing current information services 24/7 attracts and retains viewers. In addition to automatic time and date display, high-quality, pre-formatted data services are available from Capital Networks Limited through your Matrox InfonetTV reseller. Services include weather, news headlines, sports data, financial data, lottery results and trivia. Capital Networks Limited data services are received by FTP.

Automatic page creation and dynamic updates from your data files

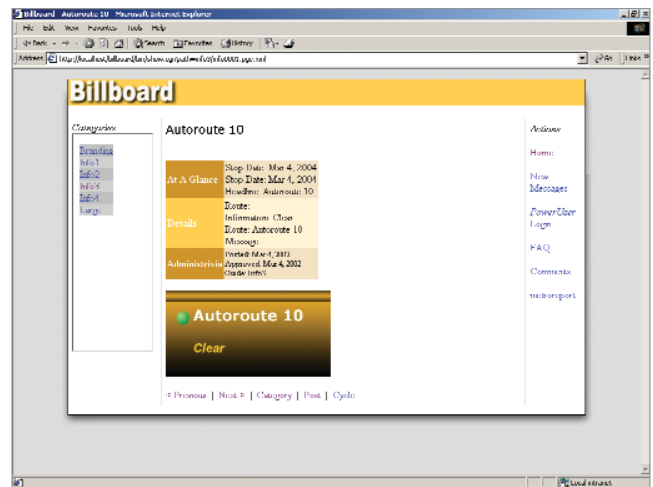
Infonet TV lets you put large databases of content online with little effort. You simply associate fields of TXT, CSV, or XML files with fields of a given template. Matrox InfonetTV automatically creates pages from your text files, and automatically updates them whenever the input data file changes. For example, this feature can be used to dynamically update information such as pricing and special liquidation promotions from data in your pricelist or inventory records. You can also automatically fill local weather report templates when using weather probes from Davis Instruments.

Remote internet submissions

The optional Audience.billboard module lets all authorized users submit pages remotely over the internet (or an intranet). For example, a store manager can log in from her office to post a "special offer" on a digital signage system or a Little League Baseball coach can log in from home to submit the evening's game results to your community information channel. In a matter of minutes, the new message will appear properly formatted for all to see. An approval mechanism can also be put in place so you can first approve content before it goes live.



Create new pages via the internet



View and approve content as it will appear in the selected zone

Manage

Matrox Infonet TV provides comprehensive scheduling and logging tools that let you easily manage your channel.

Scheduling

With Infonet TV, scheduling can be as simple or sophisticated as you require, from basic time-based broadcast playlists to comprehensive priority-based content management.

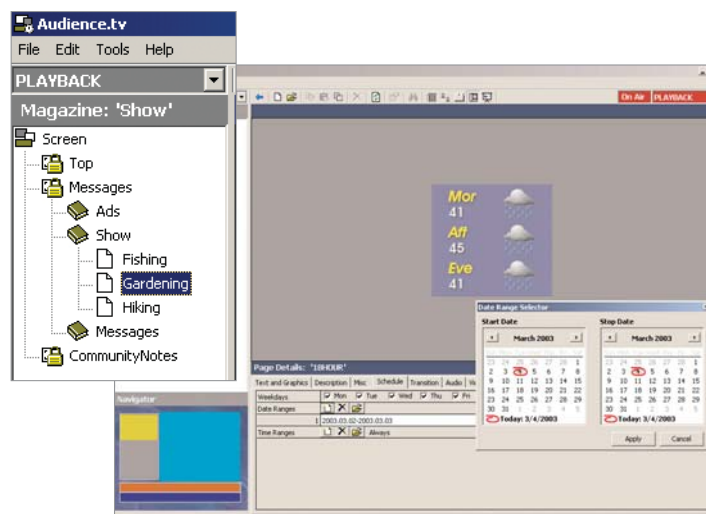
Built on the concept of multi-level priorities, Matrox Infonet TV provides an extremely powerful scheduling mechanism that is exceptionally easy to use. A combination of the priorities assigned to each element in the channel hierarchy and precise scheduling determines the channel's output. The channel hierarchy contains three layers of information: Playbacks, Screens, and Magazines. Screens, Magazines, and individual pages are prioritized within a Playback and can all be accurately scheduled by giving them "start" and "stop" dates, specific days of the week, and time ranges when they can play as part of the Playback loop. They can also be given a specific time to run without exception.

A **Playback** represents the highest level of channel management. Infonet TV lets you create multiple playbacks. For example, in a multi-point network, a master system can create Playbacks for each remote location. The Playbacks can have unique Magazines and Screens or they can share common Magazines and Screens.

A **Screen** defines the number and size of the zones in the Playback. Screens are prioritized to facilitate scheduling. Each zone in a Screen can contain multiple Magazines.

Magazines contain pages that are sequenced in playlists and associated with a given zone. By dragging and dropping pages into the playlist, you can create or modify the sequence of events for a particular zone. For example, you can drag a page more than once so it appears more often than others. You can also move pages up and down the list to change the order of appearance. The Magazines are prioritized to facilitate scheduling.

The playlist of the default Magazine of the default Screen will loop continuously. To insert other events, you simply create higher priority Magazines and/or Screens. For example, if you want a commercial break to play every 10 minutes during your show, you don't need to re-program the entire show. You simply schedule the ads in a higher priority Magazine. When the ad sequence finishes, the regular show resumes. The ability to easily re-schedule a complete show, without affecting the ads, is of prime importance, yet can be very difficult to achieve on many systems.



Intuitive scheduling tools

Logging

Billing data can be easily gathered from the complete 'as run' log produced for content displayed using Infonet TV. This log is in a CSV format, which can be imported into spreadsheets and databases.

Distribute

InfonetTV is completely scalable and can accommodate any distribution topology. From simple one-channel systems to comprehensive worldwide networks that include dozens or even hundreds of localized channels, InfonetTV gives the tools you need to deliver your information via broadcast and closed-circuit television systems (CCTV) on video monitors, plasma screens, and large-scale electronic signage including LED pixel displays. With optional software, you can also broadcast identical channels simultaneously to the web.

Broadcast television

Matrox InfonetTV is designed to integrate smoothly into the most demanding broadcast facilities. With its built-in infinite-window TBC and accurate genlock capabilities, the unit generates a signal that is stable and perfectly in sync with the rest of the broadcast operation.

Closed-circuit television

Matrox InfonetTV is compact and easy to get up and running in CCTV environments. Cabling is kept to a minimum. All you need to do is plug-in power, a mouse and keyboard, and your VGA monitor. Then you're ready to connect your plasma screens or TVs. Matrox InfonetTV doesn't require any special broadcast equipment maintenance.

Internet/intranet

The Audience.web software module lets you automatically generate interactive, graphically identical web versions of your broadcast channels. You create content only once, then broadcast to TV and the web simultaneously. All audio and video pages created in InfonetTV are automatically converted to Microsoft Windows Media streaming format for display on the web. There are no additional user steps required. Fully interactive navigation, browsing, searching, and linking are supported.

Built-in transcoding software automatically converts MPEG-2 video/audio playing back through the optional Optibase or Sigma Design card into Windows Media streaming format. The optional Osprey-220 video capture card can encode live video from VCRs and cameras into Windows Media web streaming format.

An Audience.web license enables a single server to concurrently host up to 25 different websites.



Internet/intranet

Broadcast television

Distribute

Distribution topologies

All InfonetTV installations require a master system. In simple single-channel environments, the master system is all that is required. In multi-point networks, the master system controls any number of creation-playback and/or playback-only stations.

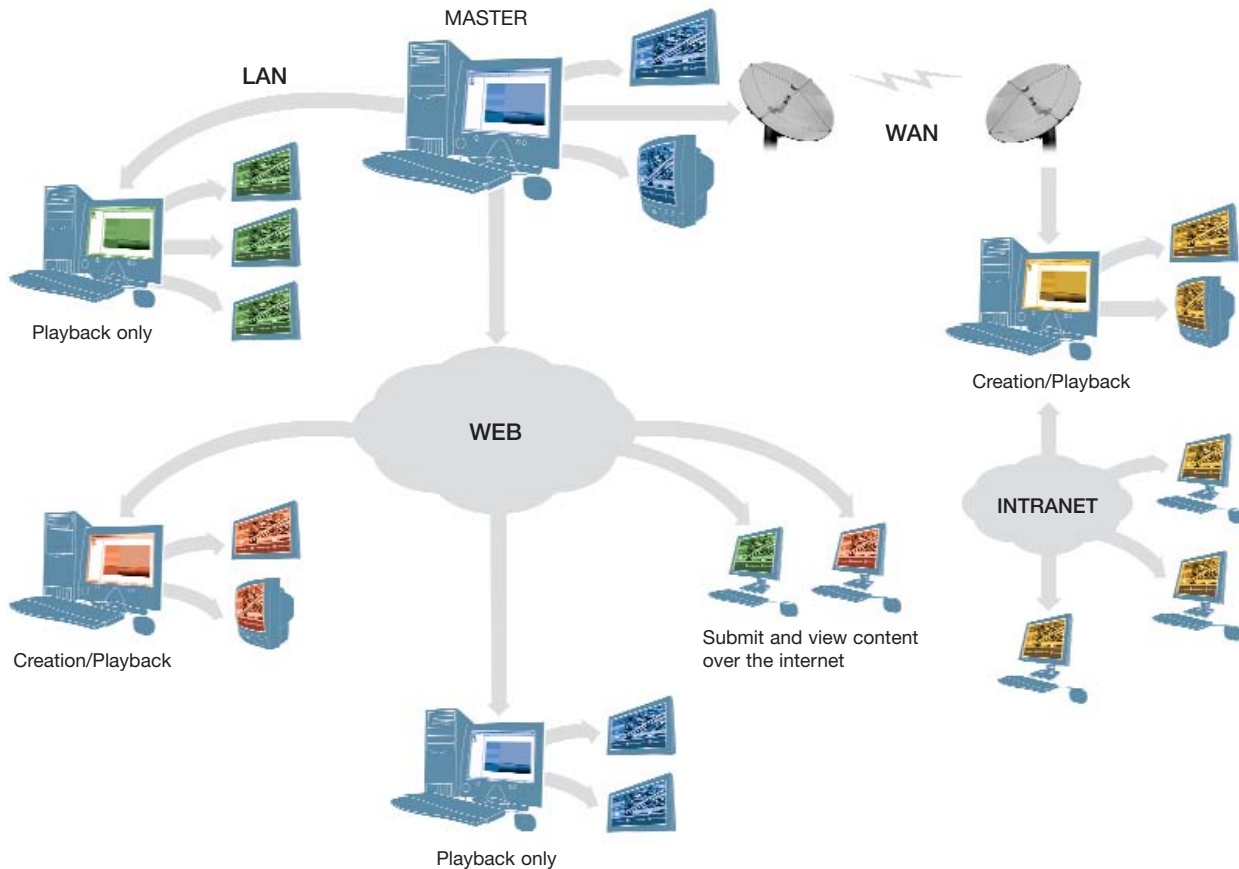
Single-channel systems

In single-channel operations, the master system handles creation, management, and distribution. It can also act as the web server.

Multi-point networks

In multi-point networks, the master system manages the data flow to remote stations. The network can be configured to include creation-playback and/or playback-only systems in the remote locations. The master system can provide all the content directly to the field, or remote stations can be used for creation and localization of some or all content. A standard IP connection over WAN, LAN, or the internet is all that is needed to securely connect the multiple systems together.

Continuous updates are ensured using a "hot sync" process similar to that used for syncing your PDA (i.e. Palm) to your computer. Each remote location initiates the synchronization process. Any page created or deleted on the master system will be automatically updated on the remote system. This ensures that all systems on the network are perfectly up-to-date. If a remote system doesn't request synchronization with the master within a specified length of time, an alarm will show up on the master system.



Four Typical System Configurations

Requirements	• Video and audio distribution • Content created on InfonetTV system	• Video and audio distribution • Content created on InfonetTV system or submitted via internet/intranet	• Video and audio distribution • Website hosting • Content created on InfonetTV system	• Video and audio distribution • Website hosting • Content created on InfonetTV system or submitted via internet/intranet
System software				
Windows XP	Yes	Yes	Yes	Yes
Audience.tv (with CorelDraw 10)	Yes	Yes	Yes	Yes
Audience.billboard	-	Yes	-	Yes
Audience.web (with Apache Web Server)	-	-	Yes	Yes
Windows Media (7.0 or higher)	-	-	Yes	Yes
System hardware				
Approved computer - P4, 512 MB RAM, etc.	Yes	Yes	Yes	Yes
20 GB system drive (holds software, graphics, and audio)	Yes	Yes	Yes	Yes
Matrox CG2000	Yes	Yes	Yes	Yes
SVGA monitor (1280 x 1024 recommended), keyboard, mouse	Yes	Yes	Yes	Yes
Video monitor for Matrox CG2000 video output	Recommended	Recommended	Recommended	Recommended
Sound card with speakers for audio output	Yes	Yes	Yes	Yes
UPS (uninterruptible power supply)	Recommended	Recommended	Recommended	Recommended
Secondary computer	-	Recommended for external hosting of Audience.billboard	Required for use with Osprey web video encoding card Recommended for external hosting of Audience.web	Required for use with Osprey web video encoding card Recommended for external hosting of Audience.web and Audience.billboard
Optional hardware				
Optibase VideoPlex or Sigma Design Netstream 2000 PCI card	For broadcast-quality MPEG-2 digital video clip playback	For broadcast-quality MPEG-2 digital video clip playback	For broadcast-quality MPEG2 digital video clip playback	For broadcast-quality MPEG2 digital video clip playback
20 GB of additional A/V storage (or more) for MPEG-2 video clips	Holds 5 hrs of DVD-quality video (8 Mbps MPEG-2)	Holds 5 hrs of DVD-quality video (8 Mbps MPEG-2)	Holds 5 hrs of DVD-quality video (8 Mbps MPEG-2)	Holds 5 hrs of DVD-quality video (8 Mbps MPEG-2)
Viewcast Osprey 220 Series video/audio capture card	-	-	Only needed for encoding live video input into streamable Windows Media format	Only needed for encoding live video input into streamable Windows Media format
Signal distribution				
Video and audio from Matrox CG2000 / sound card	Ready for baseband distribution	Ready for baseband distribution	Ready for baseband distribution	Ready for baseband distribution
RF channel modulator and channel deletion filter (may require channel combiner/ directional coupler in some cases)	Required for broadband distribution such as cable TV or closed-circuit TV, multi-channel RF	Required for broadband distribution such as cable TV or closed-circuit TV, multi-channel RF	Required for broadband distribution such as cable TV or closed-circuit TV, multi-channel RF	Required for broadband distribution such as cable TV or closed-circuit TV, multi-channel RF
Local internet access				
Subscription wire-feed data services from Capital Networks Ltd.	Available through your Matrox InfonetTV reseller	Available through your Matrox InfonetTV reseller	Available through your Matrox InfonetTV reseller	Available through your Matrox InfonetTV reseller
Persistent internet connection through third-party ISP (bandwidth requirements depend on nature of content)	Wire feed data services require consumer-grade ADSL, or cable modem	Consumer-grade ADSL, cable modem (or better)	High-speed corporate internet service or third-party hosting service for high-bandwidth streaming	High-speed corporate internet service or third-party hosting service for high-bandwidth streaming
Host, domain, and record registration	-	A fixed IP is recommended. A registered domain will be required if a fixed public website address is required	A fixed IP is recommended. A registered domain will be required if a fixed public website address is required	A fixed IP is recommended. A registered domain will be required if a fixed public website address is required
DSL Router (such as Linksys 4-port DSL router) with firewall IP connection LAN, WAN, or web	- For multi-point networks	Required to interface to public web hosting For multi-point networks	Required to interface to public web hosting For multi-point networks	Required to interface to public web hosting For multi-point networks

Matrox InfonetTV - Quick Reference

Features	Benefits
Standard features	
Fully independent screen zones	Easily create and manage multiple zones of information.
Unique "ScreenWizard" function for instant channel set-up	Your channel is up and running in no time, with a professional look.
Hundreds of pre-created templates included	Regularly change your look to attract viewers and reflect seasonal changes.
Easy-to-learn Audience.tv creation interface	No special skills are required. Anyone can contribute to entering data.
Comprehensive scheduling and logging tools	Easily manage your channel. Schedule and re-schedule multi-level playlists with ease and virtually eliminate programming errors.
Full CorelDRAW10 graphics suite included with every system	Corel offers endless creative possibilities for designing or customizing templates for your unique look.
Support for most popular graphics and audio file formats	Easily integrate multimedia elements from various sources. Automatically create pages by importing many graphics all at once, such as a PowerPoint slide show.
Automatic page creation and updates from data files	Dynamically update information such as pricing and special liquidation promotions from data in your pricelist or inventory records.
Time and date display	Information always looks fresh and current.
Broadcast quality video input/output	Quality is second to none. Matrox CG2000 offers better video performance than external scan converters.
Broadcast quality transitions and effects	Enhance your image with dynamic, eye-catching effects and transitions like you see on national television.
Realtime video scaling and positioning	Easily integrate video into any zone, at any size, anywhere on your screen.
Matrox-approved system configurations	No-hassle integration and installation.
Multi-point network features	
Completely scalable architecture	Deliver your information from a simple, very affordable, one-channel systems to comprehensive worldwide networks that include dozens or even hundreds of localized channels.
Secure hot-sync mechanism	Any page created or deleted on the master system will be automatically updated on the remote system.
Sync alarm	An alarm appears on the master system to indicate that a remote system hasn't synchronized itself within a given amount of time.
Optional features	
Weather, headline news, sports, financial, and other wire feed data services	Attract more viewers by providing information services on your channel.
Audience.billboard module for web-based content submission	Submit content over the internet from any location by any number of authorized users while maintaining full control with secure administrative tools.
Audience.web module for automatic web site creation with streaming video support	Re-purpose your information. Broadcast your channel to TV and automatically create an identical web site simultaneously, with no extra steps.
MPEG-2 digital video playback	Integrate disk-based video, in addition to a live video feed, within your channel. It's the perfect way to insert local ads.
Matrox CG2000 SDI module	No video quality compromise for broadcast facilities using serial digital distribution systems.